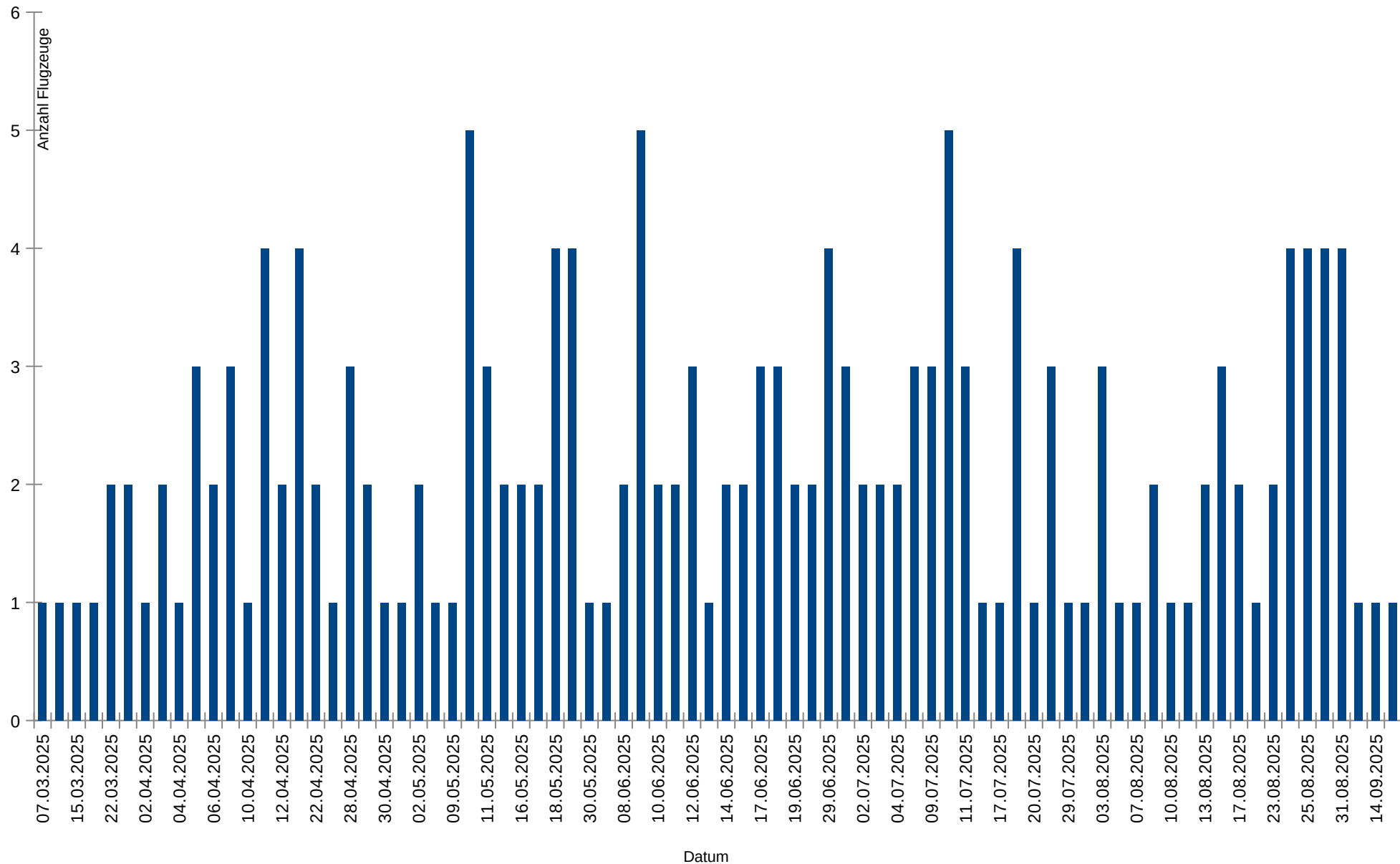
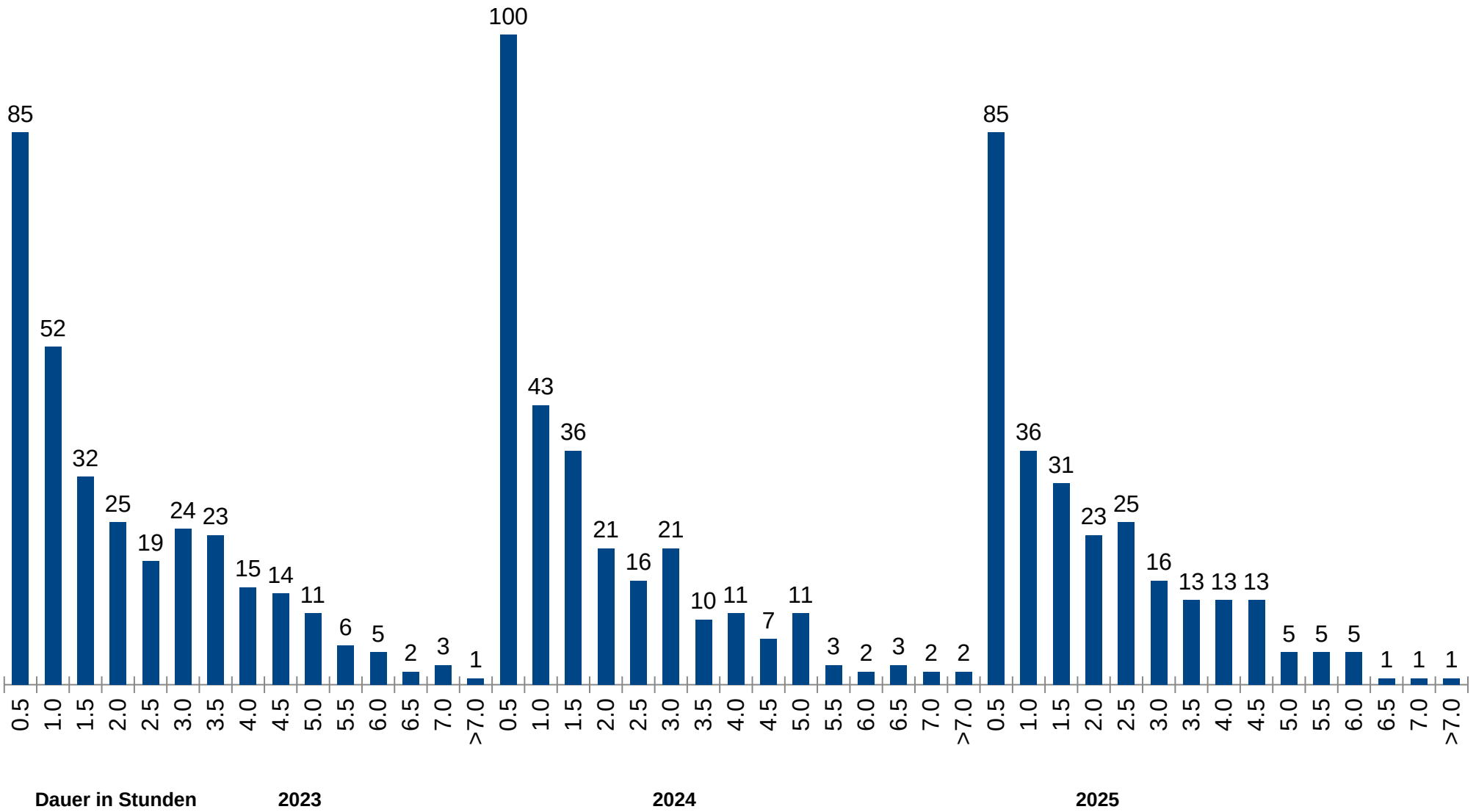


Flugzeuge pro Tag in der Luft

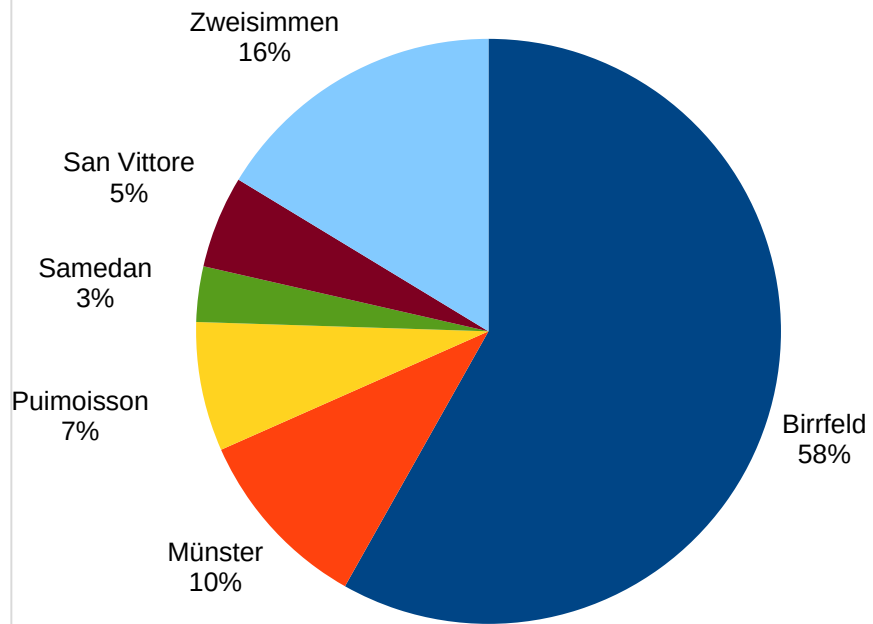


Anzahl Flüge pro Dauer

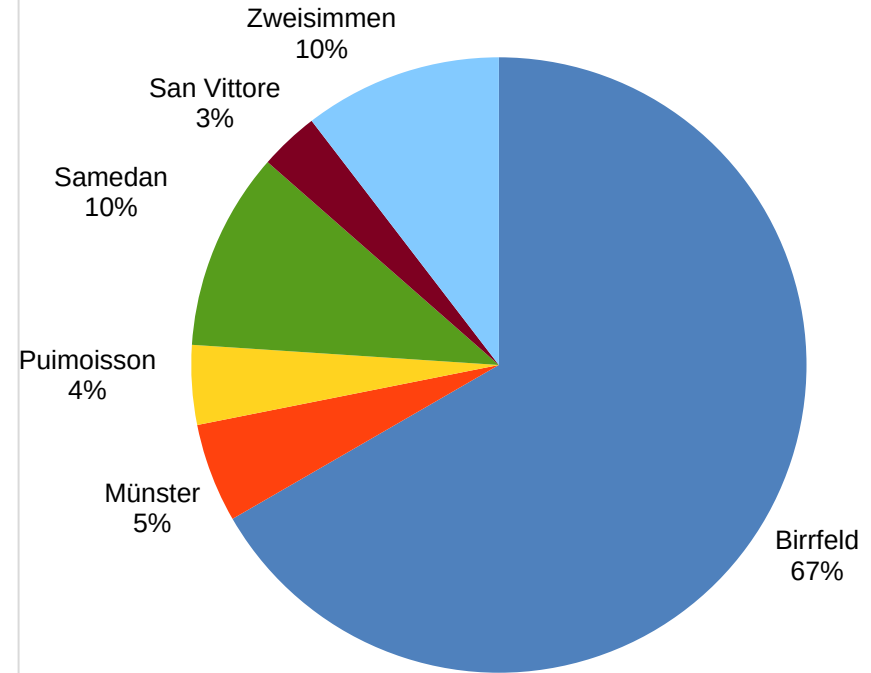


Flugplatz	Immatrikulation	Anz.Flüge
Birrfeld	HB-2496	72
Birrfeld	HB-3237	25
Birrfeld	HB-3263	34
Birrfeld	HB-3351	24
Birrfeld	HB-3421	19
Grenchen	HB-3263	1
Münster	HB-3351	8
Münster	HB-3421	4
Münster	HB-3351	2
Olten	HB-3263	10
Puimisson	HB-3351	7
Puimisson	HB-3421	5
Samedan	HB-3237	6
Samedan	HB-3263	10
Samedan	HB-3351	3
Samedan	HB-3421	9
San Vittore	HB-3263	4
San Vittore	HB-3351	3
Schupfart	HB-3421	1
Zweisimmen	HB-3237	8
Zweisimmen	HB-3263	10
Zweisimmen	HB-3421	8

Flugplatzbelegung Stunden 2025

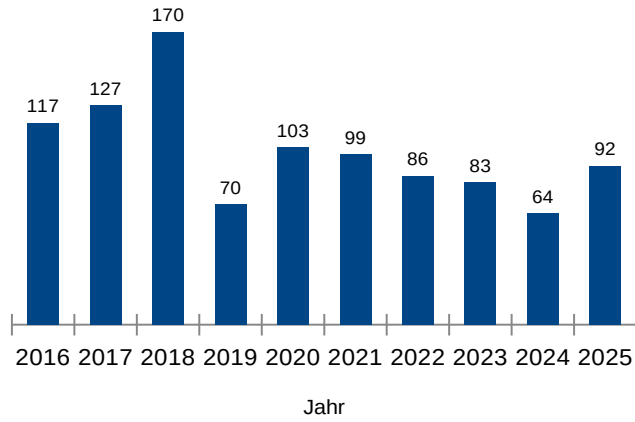


Flugplatzbelegung Landungen 2025

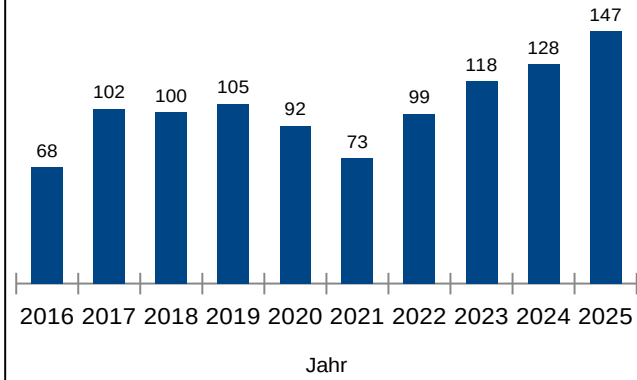


Pilot	Total		LS-8 HB-3237		LS-8 HB-3351		Ventus 2cx HB-3421		Duo Discus HB-3263		Arcus T HB-2496	
	Ldg.	Std:Min	Ldg.	Std:Min	Ldg.	Std:Min	Ldg.	Std:Min	Ldg.	Std:Min	Ldg.	Std:Min
Rutz T.	26	93:50			2	8:17	9	41:20	8	19:50	7	24:23
Kühne I.	17	68:48	2	4:17			6	50:07	3	5:28	6	8:56
Kündig B.	22	43:32	1	0:49	11	31:22			2	1:24	8	9:57
Meier M. T.	15	37:31	1	2:13	8	24:00	1	3:02	3	5:44	2	2:32
Hess J.	19	31:03	4	17:08					4	4:54	11	9:01
Deiss M.	16	30:14	8	18:02	3	7:15			5	4:57		
Rebmann R.	10	29:40			1	5:39	7	22:29			2	1:32
Kramer M.	41	27:47			2	2:18	15	14:04	11	4:17	13	7:08
Streuli C.	21	22:16	1	2:14	5	3:35	4	2:44	10	12:15	1	1:28
Lüdin M.	11	17:26	3	4:19	2	5:56			5	6:10	1	1:01
Tresch T.	15	16:57	4	2:21	11	14:36						
Dähler O.	10	14:04	7	10:18	1	2:45			2	1:01		
Blaser D.	11	13:04	5	9:05	1	2:27			5	1:32		
Hümbelin T.	4	10:52	1	5:05			1	3:54	2	1:53		
Mayer C.	4	10:34					3	9:31			1	1:03
Dubs R.	10	7:49									10	7:49
Hächler R.	3	4:32							2	3:58	1	0:34
Keller P.	2	4:32									2	4:32
Romer F.	9	3:30	2	0:09					6	2:57	1	0:24
Ramsteiner W.	1	1:08									1	1:08
Panholzer M.	1	0:58									1	0:58
Jauslin M.	2	0:36									2	0:36
Romer M.	1	0:35							1	0:35		
Frei A.	1	0:25									1	0:25
Bieri O.	1	0:25									1	0:25
Total	273	492:08	39	76:00	47	108:10	46	147:11	69	76:55	72	83:52
Durchschnitt		1:48		1:56		2:18		3:11		1:06		1:09
StdAnteil		100%		15%		21%		29%		15%		17%
AnzPiloten	25		12		11		8		15		19	

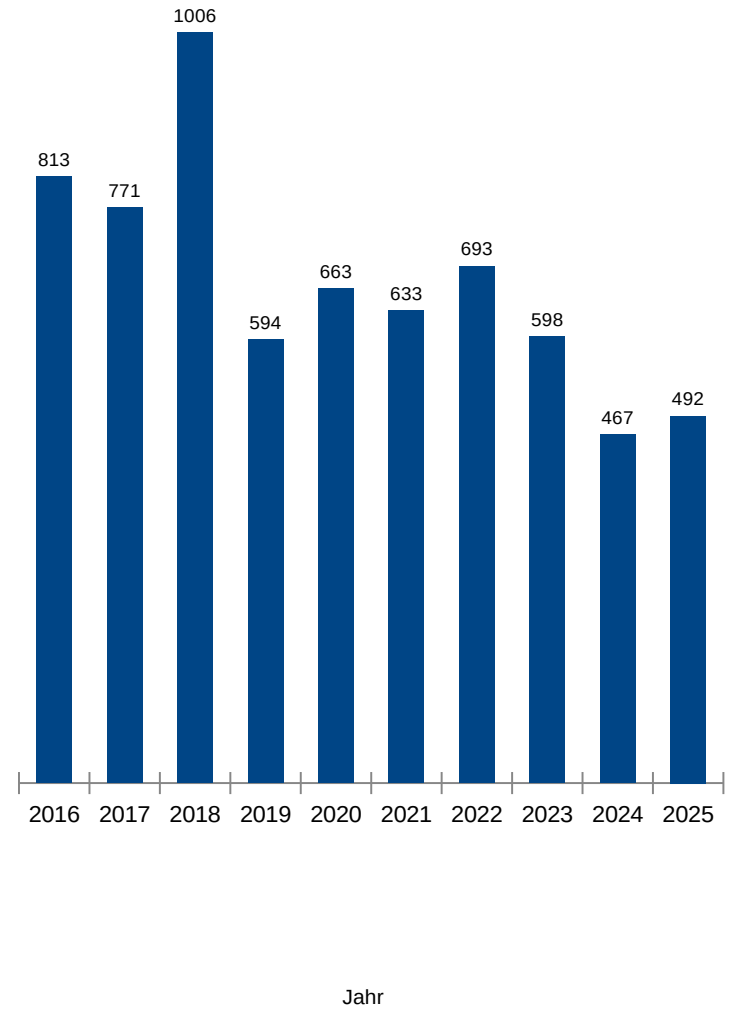
LS-8



Ventus 2cx

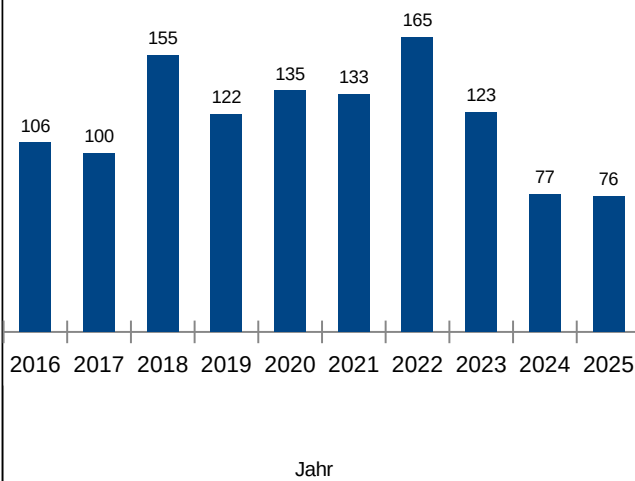


Total
(ab 2021 ohne LS-4)

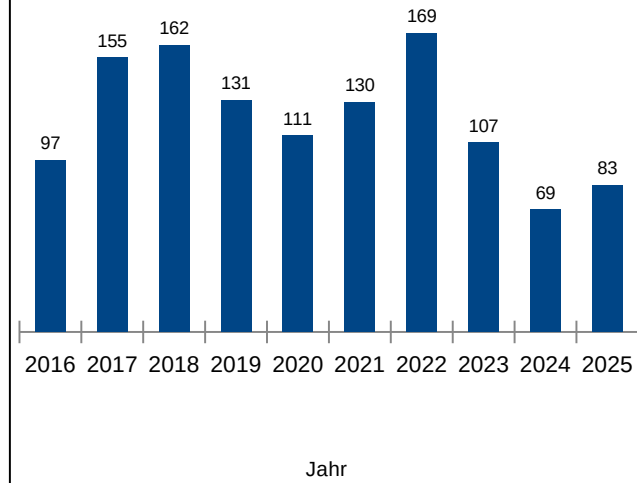


(Stundendurchschnitt pro Flugzeugtyp, z.B. LS-8 muss x3 gerechnet werden um Total aller LS-8 zu erhalten)

Duo Discus



Arcus T



IMMAT	WZ	Total 2025		Total 2024		Total 2023		Total 2022		Total 2021		Total 2020	
		Std.	Starts	Std.	Starts	Std.	Starts	Std.	Starts	Std.	Starts	Std.	Starts
HB-2496	1L	1217	861	1133	789	1064	746	957	680	788	567	658	473
HB-3133	6L											3840	2168
HB-3182	BE			3090	1348	3047	1316	3000	1288	2942	1256	2844	1180
HB-3237	7L	4041	1738	3965	1699	3893	1664	3784	1616	3679	1553	3583	1494
HB-3263	2L	4783	4173	4706	4104	4629	4027	4505	3948	4340	3837	4207	3718
HB-3351	8L	2448	1109	2340	1062	2262	1012	2169	952	2072	903	1968	839
HB-3421	3L	2105	798	1958	752	1830	701	1711	665	1612	635	1538	595